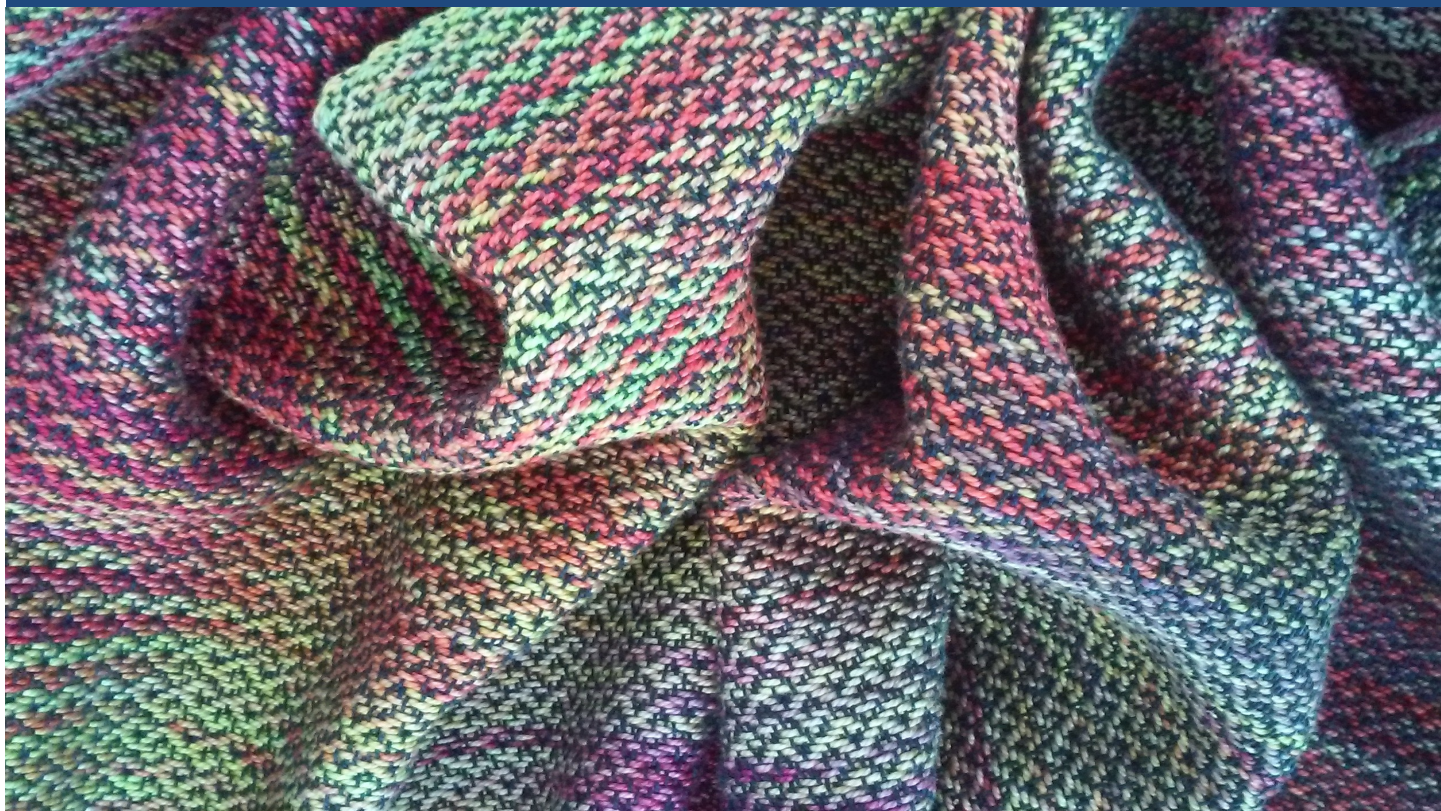


The
Shuttle
Connecting Through Fiber

February 2017

Volume 49

Issue 5



Weaver's Guild of Kalamazoo, Inc

www.weaversguildofkalamazoo.org

Our Next Meeting Is:

February 13, 2017

Our own

Lenore Snyder

from Hillsdale, MI

**“Do You Hear What I
See?”**

Come to dinner at 5 pm at Fieldstone Grill
before the meeting. RSVP by Oct. 6 to
Margie Glenn at
mushing_magg@yahoo.com

Shuttle Deadlines:

For March 2017—February 24, 2017

For April 2017—March 24, 2017

For May 2017— April 24, 2017

Please send items for The Shuttle to the
editor at

Paula.M.Clare@gmail.com

2016-2017 Officers and Committee Chairs

President – Karen VanderWeele
 Vice President – Margie Glenn
 Secretary – Terri Smith
 Treasurer – Karin Cote'
 Education – Gail Ross
 Program/Workshop Coordinator – Margie Glenn
 Scholarship Program – Anne Mehring
 Shuttle Editor – Paula Clare
 Webmaster—Jill Strobel
 Yearbook Editor – Mindy Tai
 Yearbook Fabric – Cathy McCarthy/Helen Duffy
 Service Bureau Coordinator – Melissa Powers
 Librarian – Kristi Chapman
 Library Storage – Martha Reeves
 Membership – Nancy Arlidge
 Newcomers/Welcoming – Holly Jensen
 Photographer – Linda Innes
 Historian/Archivist – Lenore Snyder
 Hospitality Chair – VACANT
 Equipment Rental – Nancy Frost
 Arts Council Rep – Gretchen Huggett
 MLH Rep – Letty Klein
 WAFA Chair – Nancy Crampton
 WAFA Treasurer – Jill Strobel
 WAFA Secretary – Cory Zann
 Exemption Committee – Nancy Clark, Karen Kendall,
 Nancy Arlidge

Study Groups

For more information, contact the study group leader.

Four Harness – Nancy Krapf/Judith Jones – meets second Thursday at 9:30 am at members' homes.

Moonbeamers—Helen Lemmer – meets fourth Monday at 7 pm at members' homes.

Multi-Harness—Marta Williams – meets third Wednesday at 9:30 am at members' homes.

Spinners—Terri Smith/Carolyn Snyder – meets third Friday 10 am to 2 pm at Parchment Library.

Swatch Exchange—Gail Ross – a virtual study group.

CSW—Lenore Snyder—meets third Tuesday, 10:30 am to 12:30 pm at Marshall District Library. No meetings Nov.—Feb.

2016-2017

WGK Program

February 13, 2017

Lenore Snyder, Hillsdale, MI
 Guild meeting presentation:
“Do You Hear What I See?”

March 13, 2017

Beth Smith, Howell, MI
 Guild meeting presentation:
“The Great Skirt Project”

April 8-9, 2017

JoAnn Bachelder, Bay City, MI
 2-Day Workshop **“Designing Stripes”**

April 10, 2017

JoAnn Bachelder, Bay City, MI
 Guild meeting presentation:
“Color”

May 8, 2017

Annual Business Meeting
 Presentations from the Study Groups



A Letter from our President

In continuing our theme of joy, I was trying to see what in my life in the weaving and fiber art area gives me joy.

I think the thing that makes me smile the most is my grandson's request for a wool "shirt". He forgot the word sweater. I, of course, got the yarn and started on it right away. But then I had to get enough for my other grandsons as well. It should keep me busy for a while.

I just found out something else that gives me joy. I acquired a new loom. It's a counterbalance which is something I'm not real familiar with and it's taking me a couple of days to figure out how to get it to work. I just got it to work. That brings me joy.

We will be learning about another type of loom this month. I have a shawl made on this type of loom made by Lenore. It is so much fun to wear. The fringe sways with delight every time I wear it.

We haven't been together since November because of the snow storm and the Holidays. I missed having the garage sale. Shall we still have one?

I attended a WAFA sale committee meeting and we would like to know what sold the best of the things you brought to the sale? Also, how much it sold for? I am going to pass out 3 by 5 cards at the meeting.

If you didn't have any thing in the sale but went to the sale what would you like to see more of? We will let you know the results.

I am looking for ways to let other weavers and fiber artists know about our Guild so, I was wondering which social media you use the most?

You can write it on the back of the 3 by 5 card.

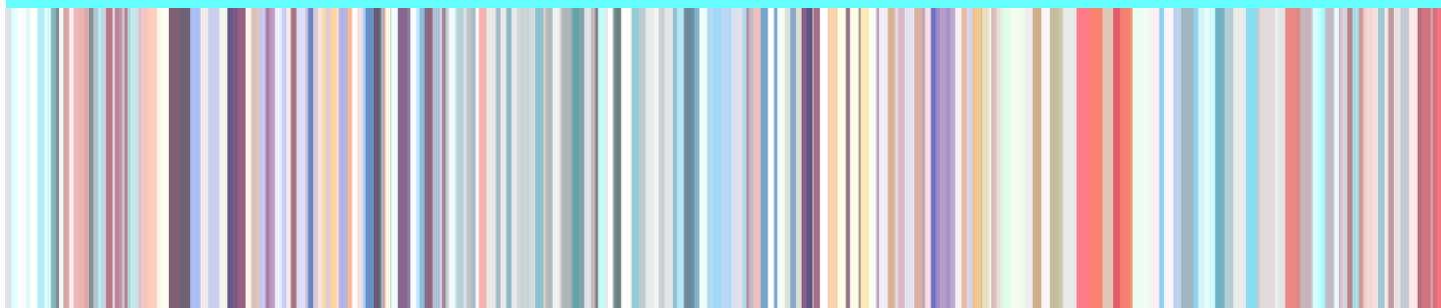
If you are making it for yourself or someone else, whether it is a "shirt" or sweater or if you're learning something new. Stay warm, wear wool.

Karen

Sign-up soon for our next Workshop

“Designing Stripes”

April 8-9, 2017 with JoAnn Bachelder



WGK Website Gallery Opening Soon!

Want to share your recent project with others?

Want to see what others are working on?

Send photos (.jpg preferred) to Jill Strobel at heronwork@yahoo.com to have your project added to a new on-line photo gallery. Please try to be sure no faces are shown, no cluttered backgrounds. We want to highlight the artistry and skill our membership demonstrates!

Library News

Martha Reeves has generously donated seven books to the guild library. We can benefit from her scholarly research of leno weaving, involving much searching through a wide range of historical references. Browsing through these books, I gained an appreciation for the depth and breadth of weaving around the world, and the diligence of those who worked to catalog and document it. You can see these books at the February meeting at the library corner.

By the way, you as a member of the guild have at your fingertips over six hundred books, swatch books, workshop notebooks as well as magazines and DVDs on a wide variety of fiber topics. Just click on this link to our listing in Library Thing and search away. If you see something of interest, send me an email and I will bring it to the next meeting. Here's the link: www.librarything.com/catalog/WeaversGuildKazoo

-Kristi Chapman, Guild librarian

Interested in training refugees to weave?

Our guild has been contacted by Barbara Hasan about whether anyone is interested in weaving training for Syrian and other refugees in Kalamazoo. Please contact her ASAP if you are interested. Thank you. Barbara Hasan
[269-544-1564](tel:269-544-1564) Email bhasan2009@gmail.com

Weavers and Fiber Artists, Inc.
Annual Sale November 17-19, 2016
June 1, 2016 - May 31, 2017

Beginning Balance		\$ 4,684.75
Deposits (Sales, Tax, Starting Cash, Tags)		\$ 25,219.01
Paid to Artists		\$ (19,011.16)
Sales Tax Paid		\$ (1,432.50)
exempt sales: \$	-	
Expenses		\$ (4,090.07)
Supplies	\$ 153.81	
Advertising	\$ 135.61	
Rent	\$ 1,437.00	
Rent 2016-17 year	\$ 160.00	
Sales Tags	\$ 491.60	
Cash Box Starter	\$ 184.50	
Check Reorder	\$ 19.99	
Accounting	\$ 250.00	
Mich. Dept. Labor	\$ 20.00	
Equip Main & Storage	\$ 50.00	
Postage	\$ 294.00	
Insurance	\$ 390.00	
Linen Rental	\$ 466.40	
bank fee	\$ 1.00	
Adjusted payments to artists	\$ 36.16	
Donated to Guild (2015 Sale)		\$ (2,000.00)
Ending Balance		<u>\$ 3,370.03</u>

Respectfully submitted, Jill Strobel, WAFA Treasurer (1.9.17)

WAFA Sale Guideline Review 2017

Following is a copy of the most recent WAFA sale guidelines. Periodically, these guidelines are reviewed and revised to reflect the new work our members are doing, and the intent of the WAFA sale.

Here's how it will work:

- A. If you would like to propose a change, you will need to write out the **EXACT** wording on the WAFA Guideline Revision Form. Keep your proposed change to three sentences maximum. Please fill out the line that indicates the exact place in the guidelines where you wish to insert, replace, or delete the wording. Each proposal will require its own Revision Form. Your actual proposal will not be edited.
- B. In the Comment Box on the form, explain to the membership why you think this Guideline change is needed. The sentences in the box will not be part of the vote; they are for background only.
- C. Completed forms must be received by **3/17/17**. You can turn them in at the March meeting, or send to Terri Feldt, 50297 Jasmine Pt., Mattawan, MI 49071 or tcfeldt@bloomingtondalecom.net. All proposals will be printed in the April Shuttle for members to review. No proposals will be accepted after the deadline.

Each proposal will be read, discussed and voted on at the April meeting. Each proposal will be voted on separately by a show of hands of current guild members in attendance. A simple majority is needed to adopt the change.

The revised guidelines will be published in the May Shuttle and on the website.

WAFB Guideline Revision Form

Turn in by 3/17/17

Your proposal: (in the exact words that will be on the ballot, 2-3 sentences maximum)

Location in Guidelines: (add, remove, change)

Explain why you think this is needed

Name: _____ Contact phone/email: _____

Send completed form to Terri Feldt at 50297 Jasmine Pt., Mattawan, MI 49071 or email to her at tcfeldt@bloomingdalecom.net

WAFA Sale Guidelines

June 2010

At the WAFA sale/exhibit, we aim to present to the public an image of our organization as one dedicated to quality in design and craftsmanship. We are primarily devoted to the knowledge of traditional and contemporary hand weaving and hand spinning. Therefore, our emphasis is on hand-woven and handspun work. Items in related fiber techniques are included when they are of exceptional quality and originality.


This event is an occasion to share our accomplishments with each other and to celebrate what it is that we do. It provides an opportunity for sociability and personal growth, for stimulating interaction among the artists and the public. All members of the Weavers' Guild of Kalamazoo, Inc. are encouraged to participate, whether beginner, hobbyist, or professional. We like to include the best current work of all members.

Although great precautions are taken to prevent the theft/loss of items submitted to the Sale, Weavers and Fiber Artists (WAFA) is not responsible for items lost, stolen or damaged during the sale/exhibit. Check your insurance for coverage. WAFA reserves the right to refuse or remove items which do not conform to the rules. Exemptions to the rules may be granted by the Exemption Committee. The Exemption Committee will meet prior to the general meeting of the Weavers Guild of Kalamazoo, in September, October and November, in order to consider exemptions. No exemptions will be made the day of the sale. Exemptions are granted for the current year only, and only to the member requesting the exemption. Items not conforming to the sale guidelines, for which no exemption has been sought, will not be allowed in the sale. Decisions of the Exemption Committee are final and binding.

GENERAL RULES & GUIDELINES:

1. Weavers Guild members participating in the sale/exhibit must sign the standard WAFA contract.
2. WAFA shall receive a twenty (20%) percent commission from the sale of each item.
3. Members participating in the sale/exhibit are to have paid their dues to the Weavers Guild of Kalamazoo, Inc., by September 30 of the year of the sale.
4. All items must be made by members of the Weavers' Guild of Kalamazoo, Inc., using a hand fiber technique.
5. All external surfaces must be handmade. Items made from kits or with commercial molds are not acceptable.
6. Items to be used/worn by young children must be constructed from child-safe fibers. Fibers that melt are NOT acceptable.
7. Price changes during the sale are not permitted. Sale tags may have no crossed off prices.
8. Sale items must be delivered at the specified time and place, and remain for the duration of the sale unless they are sold, or removed by the sale committee.

9. If special display materials are needed for a body of work, they are to be provided with the work and instructions/requirements cleared with the WAFA Board no later than the November WAFA Sale Committee Meeting.
10. Items using materials such as cornhusks, weeds or paper require Exemption Committee approval.
11. Each item submitted must carry an approved sale tag.
12. Tags may be purchased prior to Weavers Guild meetings, September - November. Tags on heavy card stock are priced at cost for the use and convenience of members.
 - a. Tags should be hung from the lower right-hand corner of wall hangings and wherever appropriate on other items.
 - b. Tags must be attached to items on the outside of any plastic protective coverings.
 - c. The information on the 1" x 2" cut-off portion must be completed accurately and clearly. WAFA is not responsible for underselling an item. Each item must have a different, separate inventory number for identification purposes. Keep inventory number at 4 digits or less.
 - d. Indicate fiber content on the tag with a mark or circle or by writing the percentage by fiber name.
 - e. Indicate care instructions on the tag. Any item marked as washable should be test-washed to insure against shrinkage, color transfer, etc. If an item has been pre-washed, indicate so on the tag. If an item is not washable, the tag should be marked "dry clean only."
 - f. Smaller, abbreviated tags are available for anything that does not need cleaning instructions (i.e. ornaments, jewelry, cards, baskets, some wall hangings). The folded standard Guild tag may also be used for these items. Indicate item description on cut-off to help us gather statistics after the sale.
 - g. Custom tags may be used, but should carry the same information and MUST have the 1" x 2" cut-off portion exactly as the standard tag. If you have questions on acceptable custom design, please contact the WAFA Board.
 - h. Items should be priced to the nearest quarter. Such as \$10.00, 10.25, 10.50, 10.75.

<p>Handmade by</p> <p>a member of the</p> <p>Weavers Guild</p> <p>of</p> <p>Kalamazoo</p> 	<p>FIBER CONTENT</p> <p>wool</p> <p>mohair</p> <p>cotton</p> <p>linen</p> <p>silk</p> <p>rayon</p> <p>synthetic</p> <p>FIBER CARE</p> <p>Machine wash</p> <p>gentle-cool</p> <p>hand wash-cool</p> <p>wash separately</p> <p>dry clean</p> <p>dry flat or hang</p> <p>machine dry-cool</p> <p>Prewashed</p>	<table border="1"> <tr> <td>Number</td> <td>Item</td> <td>Price \$</td> <td>Weaver</td> </tr> <tr> <td> </td> <td> </td> <td> </td> <td> </td> </tr> <tr> <td> </td> <td> </td> <td> </td> <td> </td> </tr> <tr> <td> </td> <td> </td> <td> </td> <td> </td> </tr> </table>	Number	Item	Price \$	Weaver												
Number	Item	Price \$	Weaver															

RULES AND GUIDELINES FOR HANDWOVENS:

1. Check carefully for errors in weaving, uneven selvages, loose threads, etc. Please store your work in a dry place. Be certain that everything is clean, fresh, wrinkle-free, and fully-finished as appropriate for the item before you offer it for sale or exhibit.
2. **GARMENTS:** The hand-woven fabric should be appropriately fulled and finished before the garment is constructed. The piece should be pressed with seams carefully finished. If commercial lining is used, it must be new fabric. Use of a commercial fabric on visible exterior surfaces should be limited to no more than ten (10%) percent of the surface area. Woven garments may have knit or crocheted bands, collars and/or sleeves using the same fibers used to weave the body of the garment. If a different commercial yarn is used, knit or crocheted elements are restricted to 25% or less of a hand-woven garment. Larger areas must be done with 100% handspun yarn or an exemption must be sought from the Exemption Committee by the November WAFA Board meeting. A weaver may collaborate with a seamstress to create a finished piece.
3. **HANDBAGS:** All seams should be strong and secure. Purse linings must be made of new fabric. Handles, straps and closures must be securely attached and be consistent with the overall design and function.
4. **RUGS:** Materials used in rag rugs must be clean. Rugs should have straight, even selvages and should lie flat. (Slight problems may be improved by blocking). Fringes, if used, should enhance the rug design.
5. **PILLOWS:** All external surfaces of pillows must be hand-woven, although piping or similar trim/edging may be used. Pillow fillings must be all new materials (by law). If an inner casing is used, it must be of new materials also. Stuffing material should not be visible. Prevent raveling with a zigzag stitch, double straight stitch, surging, blanket stitch or seam tape.
6. **WALL HANGINGS:** Pieces intended to be hung, are to be equipped for hanging from one hook. Use at least 40 lb. test weight monofilament for hanging. Frames should be sanded and finished, consistent with the piece, with no obvious screws or nails. Unframed pieces should be finished so mechanical devices are hidden, (e.g. hoops should be wrapped or coiled, rods should be painted or varnished or invisible). Decorative armatures should be consistent with the design of the piece and permanent in nature. Armatures cannot be sold separately. The backs of wall hangings should appear finished and free of loose ends.
7. **BASKETS:** Baskets must be 100% handmade. Visible commercial structures should be limited to 20% of the visible basket size. No wire frames or kit-work will be permitted.
8. **JEWELRY:** Because of jewelry's small scale, commercial yarn can be used. Pieces must use a fiber technique or beading stitch including, but not limited to, weaving, knitting, crochet, tatting, peyote stitch, or brick stitch. Simply stringing beads is not acceptable.

RULES AND GUIDELINES FOR HANDSPUNS AND HANDKNITS:

1. Anything sold as handspun must be 100% handspun. Each skein of handspun must be labeled with fiber content, yardage, weight and care instructions stated clearly on its tag. Bundled skeins must have a single sale tag. No skeins may contain crossed out prices!
2. Novelty yarns and novelty yarn items should contain no more than 50% synthetic or commercial components (e.g. metallic, buttons, bead, etc.). Items of this nature should be reviewed by the Exemption Committee.
3. Knitted or crocheted items must be made from roving or handspun yarn that meet the yarn guidelines above..

RULES AND GUIDELINES FOR ORNAMENTS:

Acceptable Ornaments should:

- Be primarily made of fiber, which may include yarn, wheat, straw, cornhusks & other natural fibers. Commercial yarn is acceptable because of an ornament's small scale.
- Prominently feature textile techniques including, but not limited to, hand-weaving, -crocheting, -knitting, and/or -felting techniques;
- Display good craftsmanship;
- Minimize the use of commercial fabric, lace, trim, plastic, flowers/weeds, wood, and metal as embellishment and/or visible support elements;
- Provide a means for hanging the item, such as a yarn loop;

Ornaments MUST NOT:

- Incorporate plastic canvas and/or plastic beads
- Be made from kits, commercial molds, or wooden cut-outs.

If in doubt as to whether an ornament meets the sale guidelines, please seek an exemption.

RULES AND GUIDELINES FOR FELTING:

1. Anything sold as hand felted must be 100% felted by the artist. No limitations will be put on use of appropriate felting machines and tools in the felting process. It is inappropriate to purchase felt from any commercial source to complete items sold in the WAFA sale. This does not include ornaments.
2. Any felted item sold in the sale must be clean and appropriately fulled and finished.
3. If the felt is laminated to a commercial fabric, the two layers should be inseparable.



EDUCATION CORNER

(Many thanks to Judith Jones and Cyndee Mishler who contributed material for this column)

Welcome Back! The days are finally growing longer and while many think of February as the low point in the winter (unless you have a Birthday ☀️ or a Valentine!), there are many holidays to enjoy and maybe the weather most conducive to staying inside and weaving/spinning/felting/knitting etc.

This month we are showcasing the **Four-Harness Study Group**, one of our original study groups. Although it is often the study group first recommended to new weavers (who may start out with 4 shaft looms and for whom “multi-shaft” sounds intimidating), its membership also boasts many experienced weavers who stay on sharing their expertise even when they’ve added more shafts to their looms. Judith Jones shares this synopsis:

“We have tackled projects with a black and white theme, Crackle Weave, Double Weave, Summer and Winter and Rep Weave to name a few. I have been a member for 8 years... Many of our members start out by knowing very little about weaving...myself included...I did not have a loom when I first joined. I knew very little about weaving. I did not attempt our yearly project for 2 years as I was not sure I could even begin to understand warps and wefts let alone how to follow a pattern. We have members with a lifetime of experience who are so willing to help and mentor the newbies...it is a great group for both experienced and those just beginning....”

Four-Harness typically has 10-15 members and welcomes newcomers. Meetings at members’ homes consist of social time (refreshments!), presentations and group discussion on a weaving topic and lots of helpful Qs and As. This guild year the group project is a potpourri of ideas—each member has a different project. One fun aspect of 4H: they do field trips. Last year they went to Greenfield Village! Why not check them out: they meet from 9-12pm the 2nd Thursday of each month...September thru June

with the final meeting being a grand potluck lunch. This year leadership is being shared between Nan Krapf and Judith Jones, both of whom would love to answer any questions. Check out some 4-H creations:







FIBER FACTOIDS:

Here is your quiz this month:

I. What is a Harness (as in Multi-Harness and Four-Harness Study Groups)?

- A. An arrangement of straps used to hold a parachute to a body
- B. A device that raises and lowers the warp threads on a loom (via heddles)
- C. Both A and B

II. What is a Shaft (as in Multi-Shaft and 4 Shaft looms)?

- A. Any well-like passage or vertical enclosed space, as in a building for an elevator
- B. A device that raises and lowers the warp threads on a loom (via heddles)
- C. Both A and B

If you answered C to both questions you are correct, but which is the “correct” term for weavers? For that matter, why do we talk about our American looms as having shafts to hold the heddles but our study groups are named Multi-Harness and Four-Harness, and not Multi-Shaft or Four-Shaft? Why do weavers joke about shaft-envy and not harness-envy (ok, I may have set myself up there). There are many discussions regarding the proper usage of these terms, and while most of us understand the intended meaning in a conversation and use the terms somewhat loosely, in the interest of accuracy I decided to do some research to learn the difference and when to use each.

One source describes a harness as a group of shafts that work together for a "particular function". So, using this definition, a true multi-harness loom would be one where a set of shafts were used for a ground warp and another set for pattern. But to distinguish from say overshot where you have separately threaded ground and pattern heddles, in the true multi-harness situation (think of a draw loom attachment or complicated Smålandsväv

adjustment to a floor loom) you have the threads going through BOTH heddles.

Things appear to have gotten muddled in the 80s and 90s through various weaving writers. To quote Su Butler off the Internet: “A "harness" is a set of shafts. Most looms in the US. are single harness, multi-shaft looms. Each individual frame that holds the heddles is called a shaft. The larger element on a loom that houses the shafts is called a harness. I learned to weave in the early 1970's and the term harness was widely used in place of shaft. Sometime in the 1980's there was a call to begin to use the terminology more accurately, but you have a generation or two of weavers and multiple written resources using the terminology incorrectly. It takes a long time to reverse that....”

And another contribution found on Weavolution:

“Atwater writes harness, Mary E. Black uses harness throughout her Key to Weaving, and Fannin writes in Handloom Weaving Technology that in GB all the frames together are called the harness and "each frame separately 'the shaft'. Most often in the U.S. the term 'harness' refers to individual frames as well as to all harness frames together." Now, for somebody who learnt English as foreign languages and knows about hood and bonnet, boot and trunk, "harness" and "shaft" could be just further proof that England and America are two countries separated by a common language...”

Perhaps a tempest in a teapot, since we all seem to know what we're talking about regardless, but for those of you who have some interest (or are new weavers and puzzled), here is a link to a “Harness vs. Shaft” comment by Faith Varrone: <http://faithvarrone.com/harness-vs-shaft/> .

HAPPY VALENTINE'S DAY!



Gail Ross, Education Chair

Contact: figeac@att.net



For sale: 4-6 harness older Leclerc jack loom, \$450 or best offer. Works well. Weavers Guild members 10% off. Email Karen Vander Weele at kkvanderweele@charter.net. Photo at left.

For Sale: Community Inclusive Recreation, a non-profit group in Battle Creek, has a number of looms that it would like to sell for very reasonable prices. These are the looms 2- LeClerc, Artisat, Jack 36" 4 & 8 Harness- Also Back Hinge Treadle Option (one is broken). 2-Schacht Table loom (we may keep one of these). 1 or 2 -Kessenich Floor Loom 1- Vintage 1950's loom and it works great! Unsure about the brand and type. Also, tons of string and yard spools. If anyone is interested or would like more information, she/he can contact the Executive Director -- Heather Meyer -- at [269-9688249, ext 11](tel:269-9688249).

For Sale: Four harness/6treadle Schacht Baby Wolf loom, 26" weaving width. Comes with 2 boat shuttles, wolf trap (fits on breast beam to hold shuttles, etc.), stroller, 12-dent reed, & 400 inserted eye heddles.

I was very happy to be able to purchase it for my beginning loom but am ready to graduate to something more complicated. It's a great workshop loom. Am just asking what I paid for it -- \$950.00 Contact Terri Smith rwests-mith@comcast.net or [269/365-2464](tel:269-365-2464). Photos at right.



Antique Wooden Yarn Winder For Sale

This piece is from Sweden and belonged to family members. The base appears to be made at a later date than the stem and winding mechanism. It is 31" tall and the distance across the spinner arms is 20".

Asking \$125.00

Please contact Jennifer Spengler at 269-381-1195





Weavers Guild of Kalama, Inc.
 P. O. Box 2795
 Kalama, WA 99003-2795
 www.weaversguildofkalama.org

Amount Requested: _____

Title of activity: _____

Name: _____ Email Address: _____

Address: _____ City & ZIP: _____

Telephone: _____ Cost of this Project/Activity: _____

Project Dates: _____ Weavers Guild Member since _____

Previous Scholarship Recipient? Yes/No _____ When? _____ Project Medium: _____
 Weaving, spinning, felting, dyeing, surface design, other

Guild/Community Involvement: _____

Summarize your activity, describing the Who, What, Where, When, Why, How, How Long and whether you chose a particular teacher or mentor for this project. **This summary will be your contract language should your proposal be funded.**

Reason for request (What do you expect to learn?) _____

Your plan to share knowledge gained (What are you proposing for your "payback" to the Guild? Can be demo, talk, Shuttle article, other) _____

How you will evaluate your project? _____

Signature: _____ Date: _____

If you need more space to discuss your project, attach additional pages.

Submit the hard copy by mail to the Guild PO address above, to be received by April 5, 2016

OR bring application to the April 11, 2016 meeting, OR email to AHMehring@gmail.com by April 5, 2016.

✓ Please note: Scholarship funds may not be used for purchase of equipment.



Weavers Guild of Kalamazoo, Inc.
 P.O. Box 2795
 Kalamazoo, MI 49003-2795
www.weaversguildofkalamazoo.org

Scholarship Application Summary and Application Form

The Weavers Guild of Kalamazoo offers a total of \$450 in funds for scholarships for active members. Funded applicants may receive up to ½ the cost of their educational project whether class, workshop or some other activity in a particular area of the fiber arts. Recipients of scholarship aid shall then provide an educational or sharing activity with the Guild. These may be a presentation at a General Meeting, to a Study Group, an article for the Shuttle or other activity.

Those who have been members of the Guild for at least one year and have participated in one or some of the following activities are eligible to apply. These may include but are not limited to:

- | | |
|---|---------------------------------|
| * Having held a Guild leadership position | * Being a paid-up member |
| * Regular attendance at Guild meetings | * Worked at the WAFA sale |
| * Having participated in a Guild sponsored workshop | * Worked for the Service Bureau |
| * Membership in a Study Group | * Mentoring a new member |

There will be two rounds of applications accepted. Round II Applications will be accepted starting with the September 12, 2016, general meeting OR sent via email to the Scholarship Chair with digital attachments where appropriate OR mailed to the Guild PO Box above and received at least 6 weeks (45 days) before need because the board has to approve all checks. The anonymous Review Panel will review as needed with calls to applicants made following the next Board meeting for budget approval and check processing. Projects to begin on or after October 15, 2016 up to the end of April, 2017.

Sharing activities are to be planned and worked out with the input of the Program officer—the Guild Vice President—and Scholarship Chair. A short letter or final report on funded activities is due by the end of the fiscal year, at the May 2017 meeting.

Those with questions are asked to call, email or meet with the Scholarship Chair, *prior* to submission.

Applications are reviewed by a panel convened by the Scholarship Chair and comprised of members from the Guild membership and a visual artist from the community chosen for their overarching, long-reaching knowledge of the visual arts, locally and beyond the community. The Chair is responsible for program administration and provision of materials to the panel, and does not vote on the applications. *All decisions of the panel are based on materials provided by the applicant. Decisions are final and may not be appealed.* The Scholarship Chair will work with an unfunded applicant to review and resubmit if applicant so wishes.

Anne Mehring, Scholarship Chair
 269-375-1639 Email: ahmehring@gmail.com

See reverse for application form.

Please note: Scholarship funds may not be used for purchase of equipment.



Weavers Guild of Kalamazoo, Inc.
P. O. Box 2795
Kalamazoo, MI 49003-2795
www.weaversguildofkalamazoo.org

Applicant Name _____ Applicant Score _____

Title of Activity _____ Amount requested/Amount Awarded _____ / _____

Fiber Medium: ☐ Weaving ☐ Spinning ☐ Felting ☐ Dyeing ☐ Other _____

Panelist Score Sheet

Comments solicited in open spaces below.

Score

Membership Criteria (Up to 5 points)	Score up to 5 points indicated in column to the right.	Score
<input type="checkbox"/> Active Weavers Guild Member for at least one year? <input type="checkbox"/> WAFA worker? <input type="checkbox"/> Leadership positions held?	<input type="checkbox"/> Study Group Member? <input type="checkbox"/> Attends meetings? <input type="checkbox"/> Mentor or Service Bureau work?	_____
Project Criteria (Up to 65 points)	Score up to number of points as indicated in column to the right.	
1. Was a brief description of activity included? Is it complete? (Up to 5 pts)		_____
2. Is the intended use of the scholarship appropriate? (Up to 5 pts)		_____
3. Did applicant explain why they wanted to pursue activity? (Up to 10 pts)		_____
4. Did they say how they would benefit from this activity? (Up to 10 pts)		_____
5. Is applicant's skill level appropriate to the proposed project? (Up to 5 pts)		_____
6. Is there ample opportunity for learning? (Up to 10 pts)		_____
7. Were project dates and location included? (Up to 5 pts)		_____
8. Is there a plan for an educational or sharing activity with the Guild membership? (Up to 10 pts)		_____
9. Information on the instructor or mentor such as biographical, teaching and artistic credentials? (Up to 5 pts)		_____
Additional Panelist's bonus points: (Up to 10 pts) These points allow the panelist to award points for an intuitive "gut" feeling about the project.		_____
Completeness of application: (Up to 20 points)		
10. Are the attachments complete? (Up to 5 pts)		_____
11. Is a work sample included? (Up to 5 pts)		_____
12. Is teacher/mentor expertise documented? (Up to 5 pts)		_____
13. Are any optional materials included? (Up to 5 pts)		_____
<input type="checkbox"/> Workshop materials <input type="checkbox"/> Correspondence with teacher/mentor <input type="checkbox"/> Letter of agreement with instructor if warranted <input type="checkbox"/> Reviews, newspaper feature stories, etc.		_____
Total Score	Maximum score is 100 points	_____

The Weavers Guild of Kalamazoo Scholarship Program provides up to \$450 in financial support for Guild members who wish to engage in educational activities that improve their skills in a particular area of fiber art. Recipients of scholarship aide shall then provide an educational or sharing activity with the Guild.

There are two anonymous panelists who are Guild members. These two, selected from among the membership are joined by a third anonymous panelist from the local arts community at large. Panelists, selected on the basis of their knowledge of the fiber arts, are fair-minded and open, non-judgmental, and free from media bias within the fiber discipline. Board members shall not serve on the panel. The panel's decision is final and may not be challenged.

WEAVERS GUILD OF KALAMAZOO
TREASURER'S REPORT 2016/2017

		2018												BUDGET	
		JUN	JUL	AUG	SEP	OCT	NOV	DEC	JAN	FEB	MAR	APR	MAY	TOTAL	BALANCE
Beginning Checkbook Balance		\$1,130.96	\$3,391.66	\$4,241.66	\$3,501.66	\$4,036.13	\$1,955.60	\$1,311.60	\$1,255.86	\$1,255.86					
INCOME															
Donations - WAFWALH		\$2,000.00													\$2,000.00
Equipment Rental		\$200.00													\$87.00
Library		\$50.00													\$50.00
Membership Dues		\$3,300.00													\$3,300.00
Workshop Income		\$1,800.00													\$1,800.00
Memorials and Gifts		\$100.00													\$100.00
Misc.		\$50.00													\$50.00
Total Income		\$7,650.00													\$7,650.00
EXPENSES															
ADMINISTRATION															
Hospitality		\$49.00													\$49.00
Insurance		\$500.00													\$500.00
Miscellaneous		\$250.00													\$250.00
Fees & Memberships		\$156.00													\$156.00
Supplies		\$210.00													\$210.00
Total Administration		\$1,185.00													\$1,185.00
PROGRAM															
Program Expense		\$2,000.00													\$2,000.00
Program Rental		\$500.00													\$500.00
Workshop Expense		\$1,100.00													\$1,100.00
Total Program Expense		\$3,700.00													\$3,700.00
PUBLICATIONS/ONGOING ACTIVITIES															
Library		\$400.00													\$400.00
Publicity		\$95.00													\$95.00
Rental Equipment		\$100.00													\$100.00
Service Bureau		\$50.00													\$50.00
Shuttle		\$100.00													\$100.00
Study Groups		\$50.00													\$50.00
Yearbook		\$700.00													\$700.00
Website		\$200.00													\$200.00
Total Publications/Ongoing Activities		\$1,885.00													\$1,885.00
AWARDS/SCHOLARSHIP/SPECIAL															
Fiber Arts Education		\$50.00													\$50.00
Exhibits		\$150.00													\$150.00
KIA Award		\$150.00													\$150.00
MFF Award		\$150.00													\$150.00
MLH Award		\$150.00													\$150.00
Quilt Scholarships		\$450.00													\$450.00
Donation in Honor of Ellen Cordon		\$850.00													\$850.00
Total Awards/Scholarship/Special		\$3,600.00													\$3,600.00
Total Expenses		\$7,610.00													\$7,610.00
Balance		\$3,381.88	\$4,241.88	\$3,501.88	\$4,036.13	\$1,955.80	\$1,311.80	\$1,255.88	\$1,255.88	\$1,255.88					\$3,381.88
TOTAL CASH BALANCE BY MONTH															
Savings		\$45.00	\$45.00	\$45.00	\$45.00	\$45.00	\$45.00	\$45.00	\$45.00	\$45.00					\$450.00
Money Market Savings		\$1,044.24	\$1,044.24	\$1,044.24	\$1,044.24	\$1,044.24	\$1,044.24	\$1,044.24	\$1,044.24	\$1,044.24					\$10,442.40
Checkbook		\$3,381.88	\$3,381.88	\$3,381.88	\$3,381.88	\$3,381.88	\$3,381.88	\$3,381.88	\$3,381.88	\$3,381.88					\$33,818.88
3 Month CD (matures 12/21/16)		\$2,903.03	\$2,903.03	\$2,903.03	\$2,903.03	\$2,903.03	\$2,903.03	\$2,903.03	\$2,903.03	\$2,903.03					\$29,030.30
24 to 36 Month CD		\$7,753.56	\$7,753.48	\$7,753.40	\$7,758.17	\$7,777.87	\$7,782.80	\$7,787.74							\$77,787.74
TOTAL		\$15,086.49	\$15,953.78	\$15,219.07	\$15,758.67	\$13,683.44	\$13,044.57	\$12,994.13	\$12,999.44						\$150,864.94

* \$50.00 was donated to bring this scholarship award to \$200.00 for this budget year.



Weavers Guild of Kalamazoo

P.O. Box 2795

Kalamazoo, MI 49007

We have a Facebook site!

Weavers Guild of Kalamazoo



Please visit, like, and post on our site!

